



Constant Tone Speaker

Constant tone speakers are useful as forward horns, in-cab warning or other specialist applications.

bbs-tek constant tone speakers are safer than a conventional horn because of its locatable/directional characteristics and elimination of nuisance noise.

For more information on the advantages of bbs-tek broadband sound alarms over conventional alarms see page 4.



Dual voltage
12V to 24V
operation



bbs tek
technology
provides
locatable
sound



Conforms
to SAE J994
environmental
standards



2 year
warranty



IP68 dust &
waterproof.
Can be steam
& pressure
cleaned
(excl. 50 Series)



Fully epoxy
sealed for
maximum
vibration
resistance
(excl. 50 Series)



90 Series



Part No. CT57TCA-2



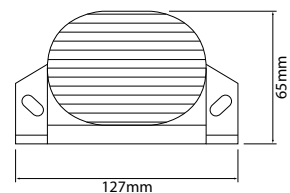
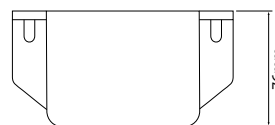
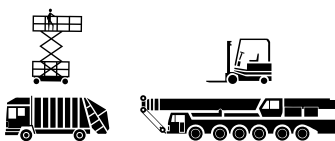
Part No. CT470

Constant Tone Specifications

Body :	50/90/400 Series	AES
EMC :		CE & 'e' marked
Standards :	Conforms to SAE J994 environmental	
Operating Temperature :	-40°C to +85°C	
IP Rating :	90/400 Series	IP68
	50 Series	IP66

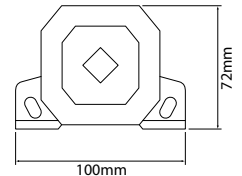
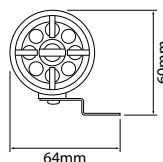
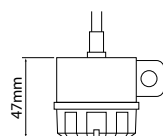
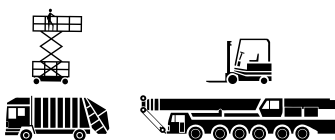
Constant Tone Speaker Medium Duty - bbs-tek®

Part No.	Volts DC	Sound Level - dB(A)@1m	Frequency - kHz	Amps	Sounder Unit	Hole Centres - mm
CTBBS92	12 - 24	92	Multi	0.3	Speaker	98 - 108
CTBBS97	12 - 24	97	Multi	0.3	Speaker	98 - 108



Constant Tone Speaker Medium Duty

Part No.	Volts DC	Sound Level - dB(A)@1m	Frequency - kHz	Amps	Sounder Unit	Hole Centres - mm	Fig
CT57TCA-2*	12 - 24	90	1.3	0.02	Piezo	Single 8mm	1
CT470	12 - 24	102	1.25	0.3	Speaker	76 - 82	2



*Epoxy potted PCB

Fig.1

Fig.2

Disc & Scroll Type

Total Source offer both disc and scroll horns suitable for light to heavy duty vehicles.

Both style horns are available in high and low frequency versions and all come with universal brackets.

The disc horns are available in a 12 or 24 volt kit consisting of both high and low frequency models.



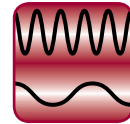
12V & 24V models available

12V or 24V

Flush & right-angle brackets standard with heavy duty horns



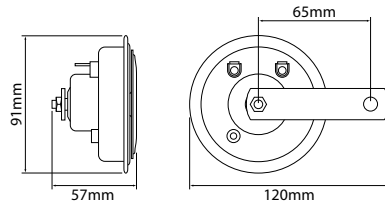
High or low frequency models available



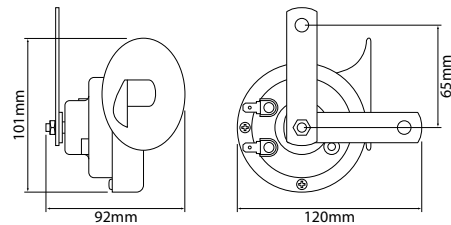
Scroll horns feature dual mounting brackets for secure installation



Disc Horns				
Part No.	Voltage	Output - Hz	dB(A)	Description
D212KIT	12			Kit consisting of both high & low horns
D224KIT	24			Kit consisting of both high & low horns
D2H12	12	420	110	Twin terminal, high frequency
D2H24	24	420	110	Twin terminal, high frequency
D2L12	12	335	110	Twin terminal, low frequency
D2L24	24	335	110	Twin terminal, low frequency



Scroll Horns				
Part No.	Voltage	Output - Hz	dB(A)	Description
S2H12	12	505	110	Twin terminal, high frequency
S2L12	12	425	110	Twin terminal, low frequency



Heavy Duty Horns				
Part No.	Voltage	Output - Hz	dB(A)	Description
SY100	12	395	120	Twin terminal, heavy duty
SY101	24	395	120	Twin terminal, heavy duty

