



## Terminal Insulators

Increase product safety by preventing electrical shorts and shocks.  
An extensive range of insulators suitable for use in a multitude of applications from small alternator terminal caps to large battery terminals.



Wide range available



Finger tab for easy removal on all 200 Series



Protect terminals from accidental shorts



90° Lead



Straight Lead



200 Series



Alternator Cap

### Terminal Insulator Specifications

Material: Flexible PVC  
Flammability: UL94V2

#### Battery Terminal Insulators - 90° Lead

Red	Black	Type	Wire Size - mm (A)	Fig
SY2912-RED	SY2912-BLK	Right hand. Heavy duty	18	1
SY2914-RED	SY2914-BLK	Left hand. Heavy duty	18	2

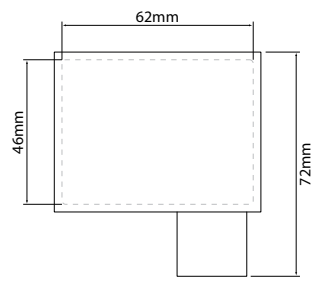


Fig.1

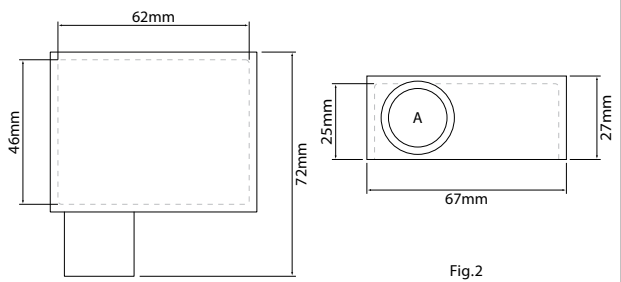


Fig.2

# Terminal Insulators

## Battery Terminal Insulators - Straight Lead

Red	Black	Type	Wire Size - mm (A)	Fig
SY2917-RED	SY2917-BLK	Medium duty	13	1
SY2919-RED*	SY2919-BLK*	Heavy duty	17	2

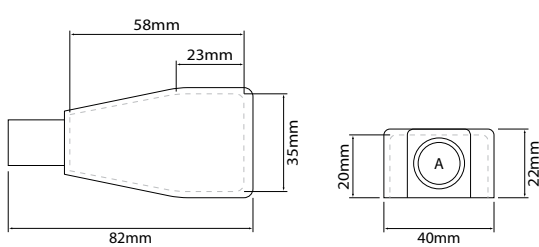


Fig.1

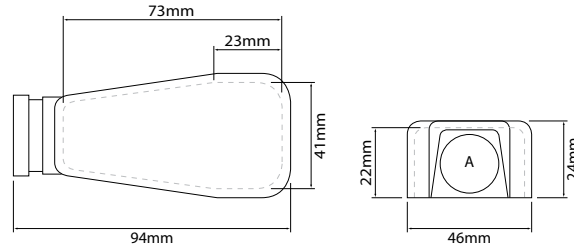


Fig.2

\*To be updated to Fig.1 style when current stock has been depleted.

## Terminal Insulators - Alternator Cap

Red	Black	Type	Wire Size - mm	Fig
NA	SY2900-BLK	Standard duty	4	1
SY2980-RED	SY2980-BLK	Standard duty	8	2
SY7034-1811	NA	Standard duty	9	3

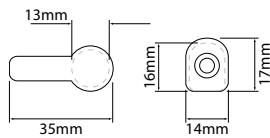


Fig.1

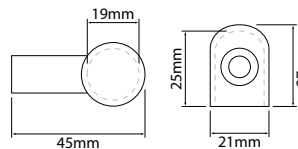


Fig.2

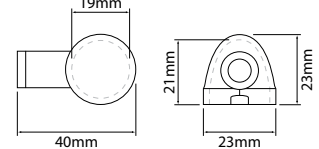
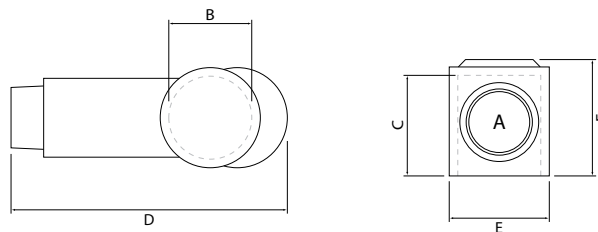


Fig.3

## Terminal Insulators - 200 Series

Red	Black	Type	Wire Size - mm (A)	B - mm	C - mm	D - mm	E - mm	F - mm
SY2960-RED	SY2960-BLK	Standard duty	3 - 6	13	19	54	18	22
NA	SY2965-BLK*	Medium duty	4 - 6	18	22	63	21	24
SY2965-RED	NA	Medium duty	8 - 14	18	22	63	21	24
SY2968-RED	SY2968-BLK	Heavy duty	14 - 18	21	26	78	26	28
SY2971-RED	SY2971-BLK	Heavy duty	14 - 18	26	31	89	30	33
SY2975-RED	SY2975-BLK	Heavy duty	20 - 24	34	38	86	38	41



\*To be updated to 8 - 14 mm wire size when current stock has been depleted.