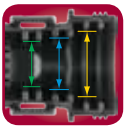




Backshells for DT Series

Designed to provide an interface connection between Schlemmer conduit and DT Series Deutsch connectors. The innovative design of the Backshell allows each unit to accommodate several different sizes of conduit. The Backshells provide secure attachment to PA6, PPmod Lockable or PP Split conduit, and are designed to facilitate the attachment of heat shrink to rear of housing. The Backshell range is available for the entire standard Deutsch DT range.



Each Backshell accepts 3 conduit sizes



Quick & easy hand assembly - no tools required



Compatible with PA6, PPmod Lockable or PP Split conduit



Protect from dirt, paint over spray & pressure washing

Deutsch Backshells suiting DT Plugs



Part No. DT2SBS-ST



Part No. DT2SBS-RA



Part No. DT12SBS-ST



Part No. DT12SBS-RA

Deutsch Backshells suiting DT Sockets



Part No. DT2PBS-ST

Part No. DT2PBS-RA



Part No. DT12PBS-ST



Part No. DT12PBS-RA



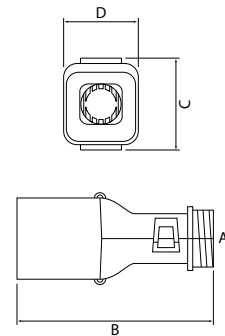
DT Series Backshell Specifications

Material : Polyamide 66 (PA66) Black
 Operating Temp : -40°C to +125°C

Connector Insulators

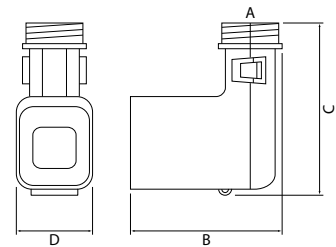
Backshells to suit Deutsch DT Series Plugs - Straight

| Part No. | Suits | NW (A) | NC (A) | B - mm | C - mm | D - mm |
|------------|----------|--------------|------------|--------|--------|--------|
| DT2SBS-ST | DT06-2S | 7.5, 8.5, 10 | 8, 10, 12 | 42 | 37 | 19 |
| DT3SBS-ST | DT06-3S | 7.5, 8.5, 10 | 8, 10, 12 | 46 | 48 | 23 |
| DT4SBS-ST | DT06-4S | 7.5, 8.5, 10 | 8, 10, 12 | 44 | 45 | 22 |
| DT6SBS-ST | DT06-6S | 7.5, 8.5, 10 | 8, 10, 12 | 45 | 50 | 23 |
| DT8SBS-ST | DT06-8S | 8.5, 10, 13 | 10, 12, 16 | 49 | 51 | 28 |
| DT12SBS-ST | DT06-12S | 12, 13, 17 | 14, 16, 20 | 55 | 51 | 36 |



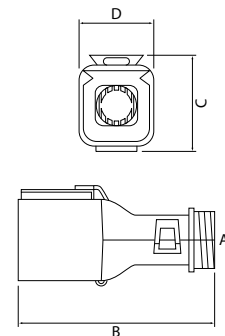
Backshells to suit Deutsch DT Series Plugs - 90°

| Part No. | Suits | NW (A) | NC (A) | B - mm | C - mm | D - mm |
|------------|----------|--------------|------------|--------|--------|--------|
| DT2SBS-RA | DT06-2S | 7.5, 8.5, 10 | 8, 10, 12 | 32 | 37 | 19 |
| DT3SBS-RA | DT06-3S | 7.5, 8.5, 10 | 8, 10, 12 | 37 | 48 | 23 |
| DT4SBS-RA | DT06-4S | 7.5, 8.5, 10 | 8, 10, 12 | 35 | 44 | 22 |
| DT6SBS-RA | DT06-6S | 7.5, 8.5, 10 | 8, 10, 12 | 39 | 50 | 21 |
| DT8SBS-RA | DT06-8S | 8.5, 10, 13 | 10, 12, 16 | 41 | 50 | 29 |
| DT12SBS-RA | DT06-12S | 12, 13, 17 | 14, 16, 20 | 45 | 51 | 36 |



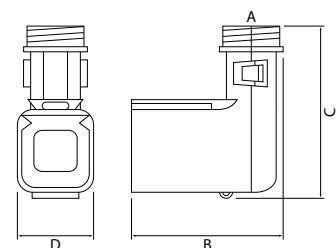
Backshells to suit Deutsch DT Series Sockets - Straight

| Part No. | Suits | NW (A) | NC (A) | B - mm | C - mm | D - mm |
|------------|----------|--------------|------------|--------|--------|--------|
| DT2PBS-ST | DT04-2P | 7.5, 8.5, 10 | 8, 10, 12 | 55 | 20 | 19 |
| DT3PBS-ST | DT04-3P | 7.5, 8.5, 10 | 8, 10, 12 | 65 | 27 | 23 |
| DT4PBS-ST | DT04-4P | 7.5, 8.5, 10 | 8, 10, 12 | 59 | 24 | 22 |
| DT6PBS-ST | DT04-6P | 8.5, 10, 13 | 10, 12, 16 | 65 | 28 | 22 |
| DT8PBS-ST | DT04-8P | 8.5, 10, 13 | 10, 12, 16 | 62 | 30 | 28 |
| DT12PBS-ST | DT04-12P | 12, 13, 17 | 14, 16, 20 | 64 | 29 | 36 |



Backshells to suit Deutsch DT Series Sockets - 90°

| Part No. | Suits | NW (A) | NC (A) | B - mm | C - mm | D - mm |
|------------|----------|--------------|------------|--------|--------|--------|
| DT2PBS-RA | DT04-2P | 7.5, 8.5, 10 | 8, 10, 12 | 45 | 18 | 18 |
| DT3PBS-RA | DT04-3P | 7.5, 8.5, 10 | 8, 10, 12 | 56 | 25 | 23 |
| DT4PBS-RA | DT04-4P | 7.5, 8.5, 10 | 8, 10, 12 | 53 | 22 | 22 |
| DT6PBS-RA | DT04-6P | 8.5, 10, 13 | 10, 12, 16 | 55 | 26 | 21 |
| DT8PBS-RA | DT04-8P | 8.5, 10, 13 | 10, 12, 16 | 57 | 27 | 28 |
| DT12PBS-RA | DT04-12P | 12, 13, 17 | 14, 16, 20 | 59 | 29 | 36 |





Deutsch Connector Insulators

Deutsch Connector Insulators are designed specifically to insulate the unprotected cables between Deutsch connectors and the joining harness or conduit.

Suitable for the DT, HD10, HD30 and DRC ranges, Deutsch Connector Insulators are a quick and easy method of cable protection.



Quick & easy protection of area between conduit & connector



Operating temperature
-28°C to +82°C



Light weight & flexible



Highly resistant to abrasion



DT Series



HD10 & HD30 Series



DRC Series

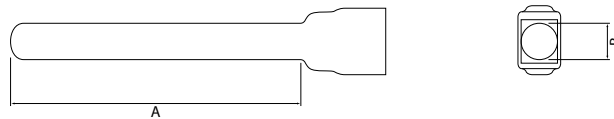
Connector Insulator Specifications

| | |
|-----------------|----------------|
| Material: | Plastisol |
| Operating Temp: | -28°C to +82°C |
| Wall Thickness: | 1.5mm |

Connector Insulators

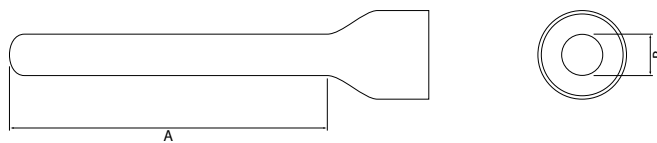
Deutsch Connector Insulators - DT Series

| Part No. | Suits | A - mm | B - mm |
|--------------------|-----------------|--------|--------|
| DT2P-BT120 | DT04-2P plug | 110 | 10 |
| DT2S-BT120 | DT04-2S socket | 110 | 10 |
| DT3P-BT120 | DT04-3P plug | 110 | 10 |
| DT3S-BT120 | DT04-3S socket | 110 | 10 |
| DT4P-BT120 | DT04-4P plug | 110 | 12 |
| DT4S-BT120 | DT04-4S socket | 110 | 12 |
| DT6P-BT120 | DT04-6P plug | 110 | 12 |
| DT6S-BT120 | DT04-6S socket | 110 | 12 |
| DT8P-BT120 | DT04-8P plug | 110 | 16 |
| DT8S-BT120 | DT04-8S socket | 110 | 17 |
| DT12P-BT120 | DT04-12P plug | 110 | 18 |
| DT12S-BT120 | DT04-12S socket | 110 | 18 |



Deutsch Connector Insulators - HD10 & HD30 Series

| Part No. | Suits | A - mm | B - mm |
|------------------|---|--------|--------|
| HD10-3BT | HD10 connectors with shell size 3 | 110 | 13 |
| HD10-6BT | HD10 & HD30 connectors with shell size 6, 9 or 18 | 110 | 19 |
| HD30-24BT | HD30 connectors with shell size 24 | 110 | 25 |



Deutsch Connector Insulators - DRC Series

| Part No. | Suits | A - mm | B - mm |
|-----------------|------------------------------------|--------|--------|
| DRC24-BT | Plugs & sockets with shell size 24 | 110 | 22 |
| DRC40-BT | Plugs & sockets with shell size 40 | 110 | 28 |
| DRC70-BT | Plugs & sockets with shell size 70 | 140 | 36 |

